

Accessories for Minimal Quantity Metering

for chain lubrication and surface wetting

Brush



Nozzles

Pinpoint application of metered quantities of oil

Brushes

Storage of lubricant, continuous application

Spray head



Spray and mixing heads

Even spraying of lubricant with the help of air

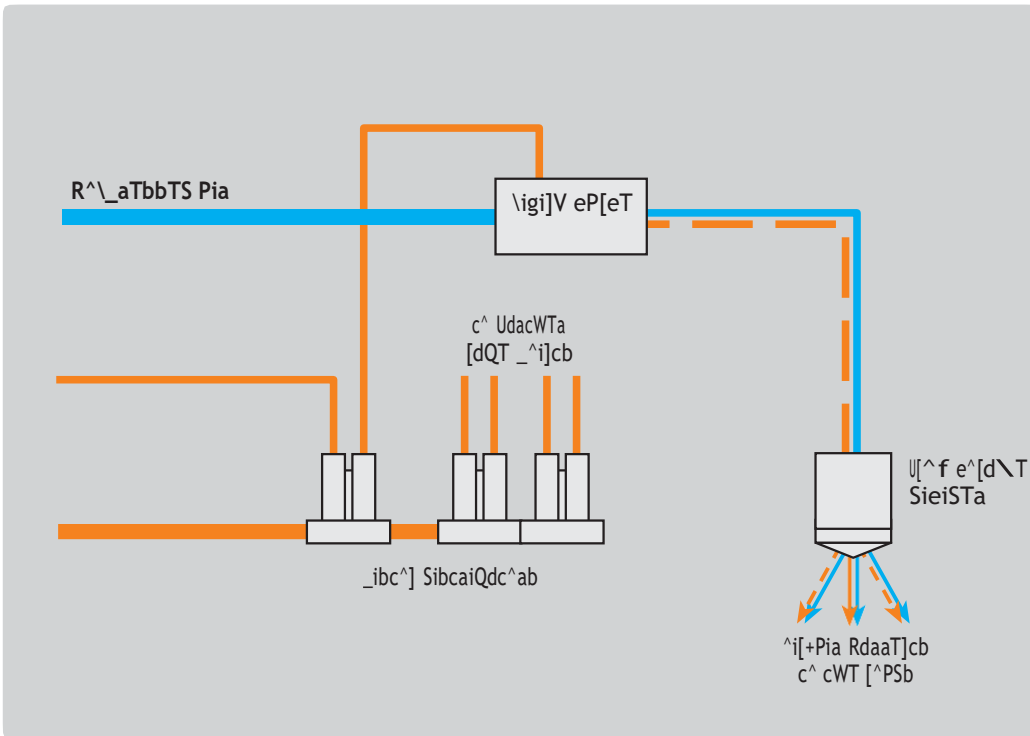
Flow volume divider



Flow volume dividers

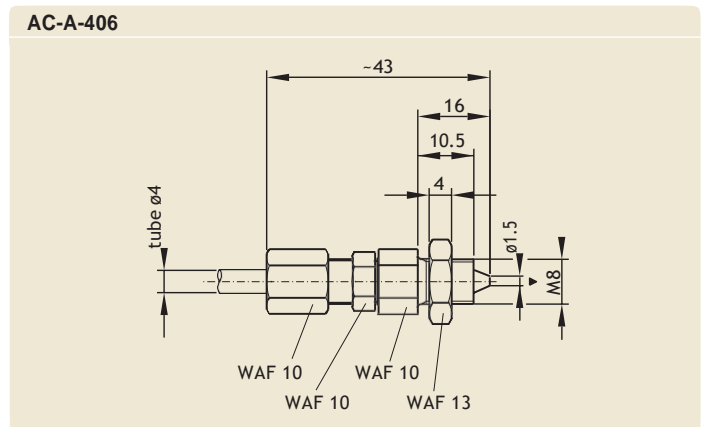
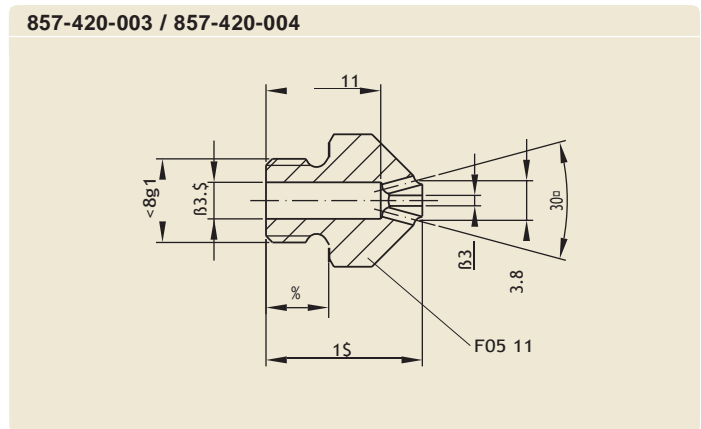
Division of a continuous oil+air current into 2, 3, 4, 5 or 6 equal quantities

See illustration on page 2 to see these accessories in a system.



Nozzles with and without check valve
for pinpoint application of a metered quantity of oil

Nozzles		
Order No.	Number of outlet ports	øD [mm]
857-420-003	1	0.6
857-420-004	3	1.0
AC-A-410	1	



Spray heads with check valve, without metering of their own

A metered quantity of oil is fed to a current of air in spray heads, which are always used when a fixed connection of the secondary line to the lube point is not possible, e.g. for the lubrication of chain links, gears, tools and workpieces.

The oil is apportioned by piston distributors installed between the pump and spray heads.

Spray heads

Order No.	Number of bores
SP11	1
SP13	3
501-100-009	1
501-100-010	3

Connection pieces tapped for solderless tube connection for air and oil line

Order No. **402-006** for tube 2.5 mm diam.

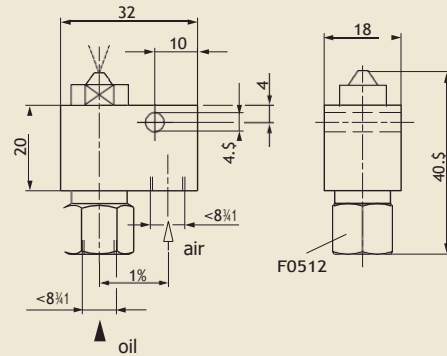
Order No. **404-003** for tube 4 mm diam.

Order No. **406-158** for tube 6 mm diam.

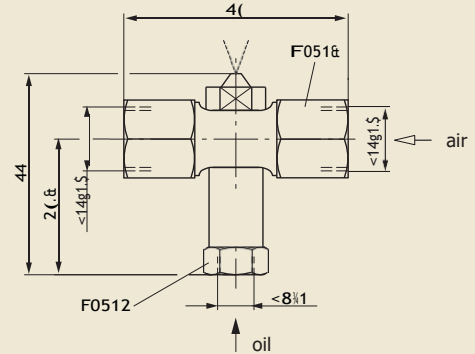
Washer, order No. **DIN7603-A8x11.5-CU**

Please, see important product usage information on the back cover.

SP11 / SP13



501-100-009 / 501-100-010



Brushes

Fig. 1

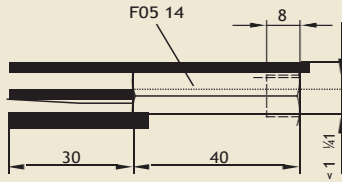


Fig. 2

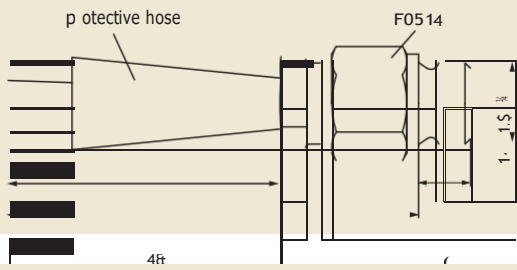


Fig. 3

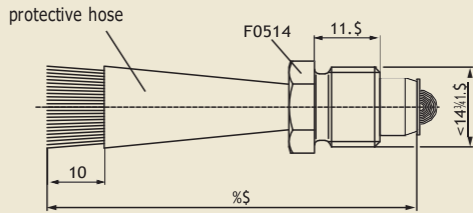


Fig. 4

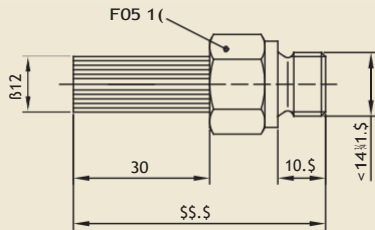
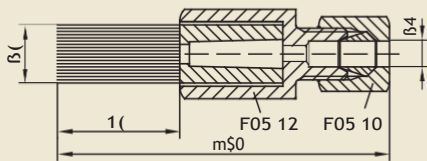


Fig. 5



Brushes

Order No.	Brush material	Protective hose	Fig.
992-000-289	Perlon, soft	-	1
995-001-577	horse hair	-	2
995-001-616	horse hair	ja	4
995-001-626	horse hair	-	3
995-001-627	horse hair	ja	3
992-000-280	PA	-	4
24-2580-2030	PA 6.6	-	5

Order No.	Brush material	L1	L2	øD	Fig.
169-000-193	corrugated	25	45	28	6
169-000-194	cast steel wire	25	53	16	6

992-000-171	horse hair				7
-------------	------------	--	--	--	---

Fig. 6

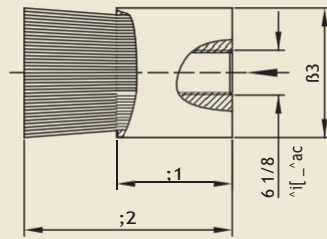
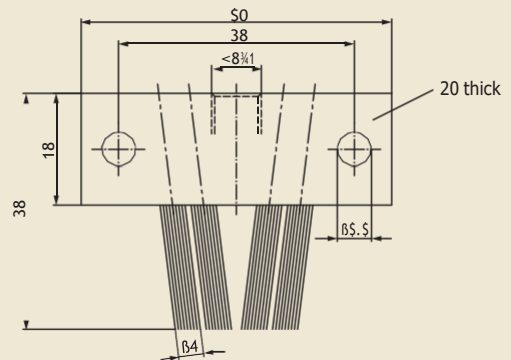


Fig. 7



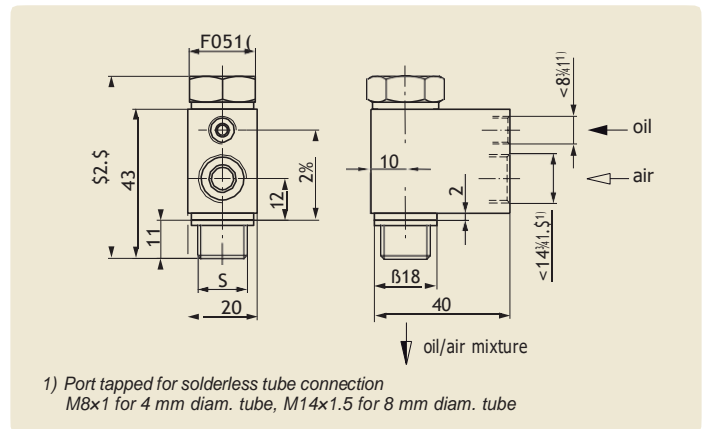
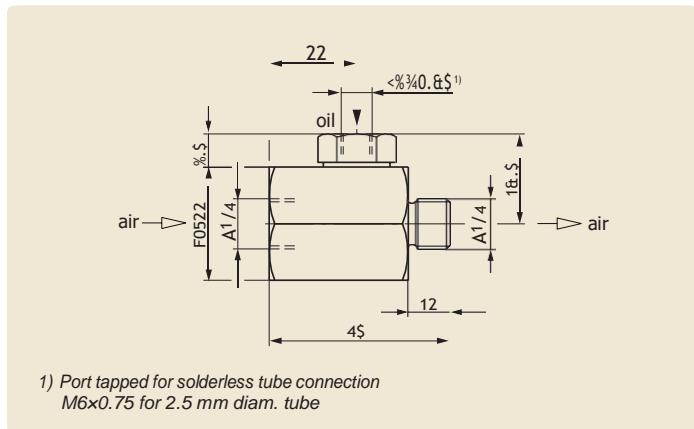
Mixing heads without metering of their own

to supply **one** load

The pressure line and secondary line come together in mixing heads. The mixing heads can be introduced directly into the consuming point's thread.

Mixing heads require a metering piston distributor of an intermittently operated single-line central lubrication system or an injection oiler in order to supply oil (cf. leaflet 1-5012-4-EN).

Since no oil is deposited in the pressure line, there is no "cloud of oil haze" when a system is started up after a shutdown.



Mixing heads for 2.5 mm diam. secondary line

Order No. _____

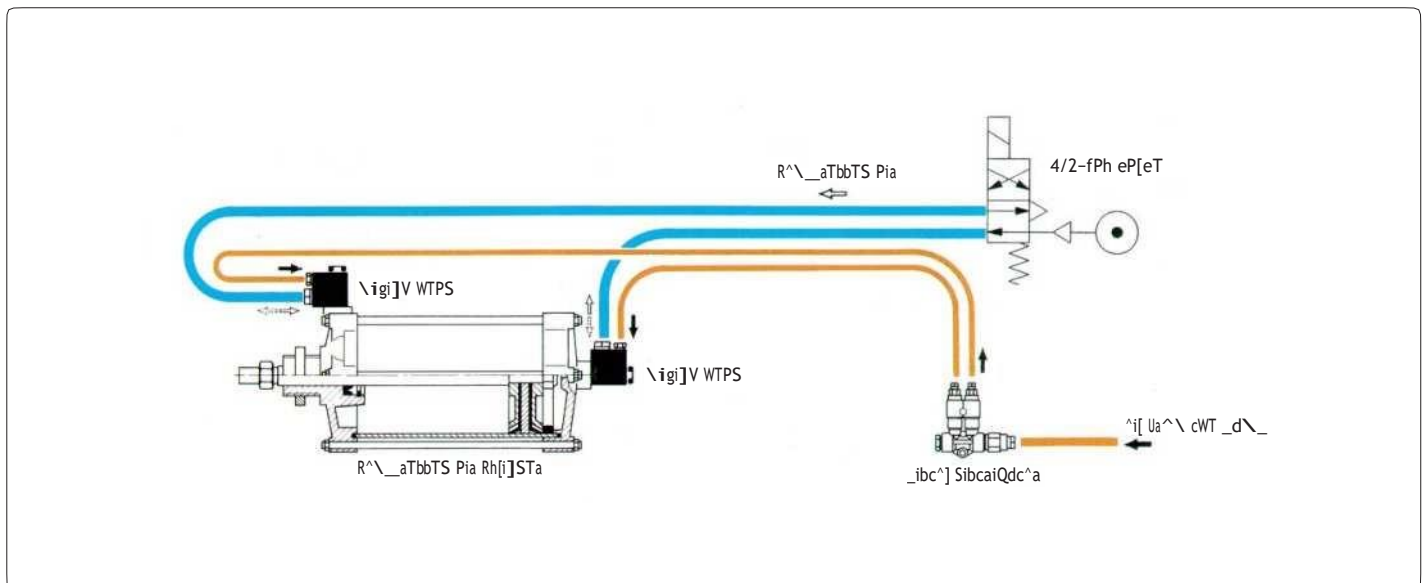
161-300-308

Mixing heads for 4 mm diam. secondary line

Order No. _____

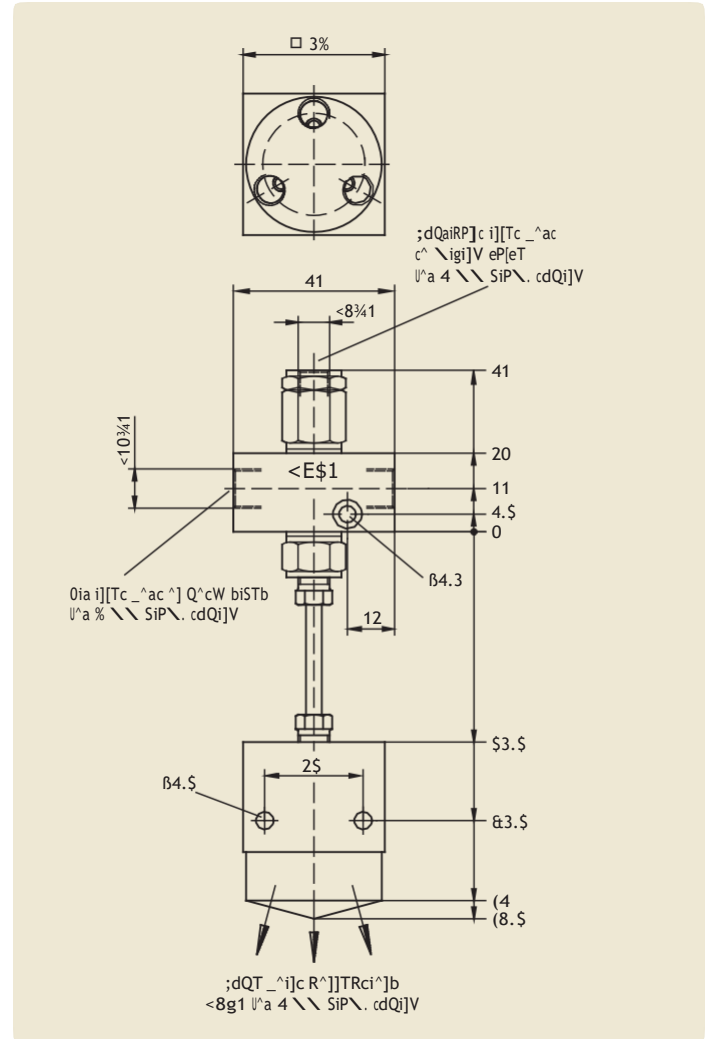
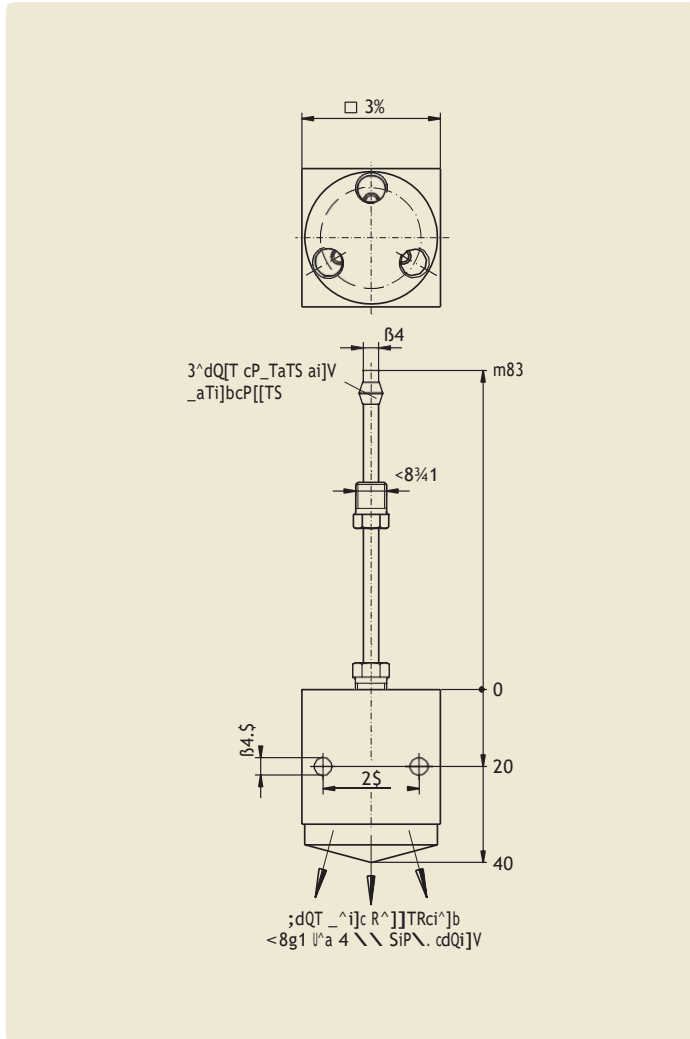
161-300-301 M14x1.5

161-300-302 G 1/4 A



Flow volume dividers

For uniform apportionment of oil+air or fluid grease+air currents to 2 or more lube points. The outlet ports should be as free of pressure as possible, but differences in secondary-line length of up to 0.5 m are of no consequence.



Order No.	Lube points
169-000-182	2
169-000-183	3
169-000-184	4
169-000-185	5
169-000-186	6

Mounting position preferably vertical

Order No.	Lube points
169-000-252	2
169-000-253	3
169-000-254	4
169-000-255	5
169-000-256	6

Mounting position preferably vertical



4000 Airline Dr, Suite D Houston, TX,77022
 Phone: +1-346-398-4400
 Email: sales@delreypartners.com