

# EVOLo 633 GRADE A1-H

## APPLICATION

Optimum vibration isolation for a wide range of applications. For larger, heavy-weighted equipment under extreme conditions that needs optimal vibration isolation at both high and low frequencies, such as large generator sets, pump units, large diesel engines, compressor/cooling units, gearboxes, windmills, deck house mountings, control cabins.

## MATERIAL

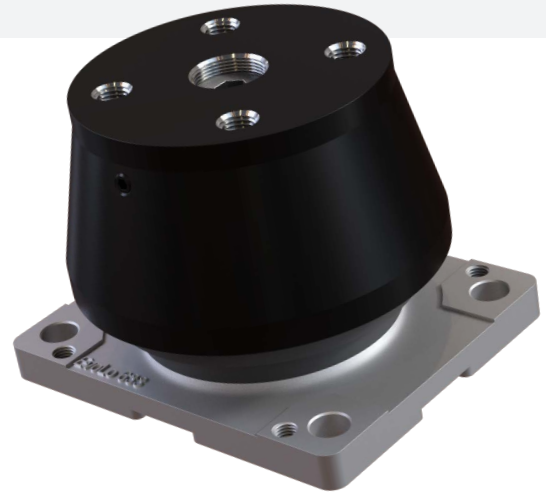
Rubber part: Highest quality natural rubber  
Metal: Aluminum/Steel

## IDENTIFICATION

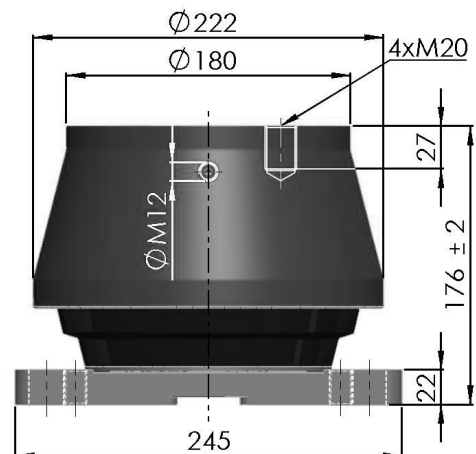
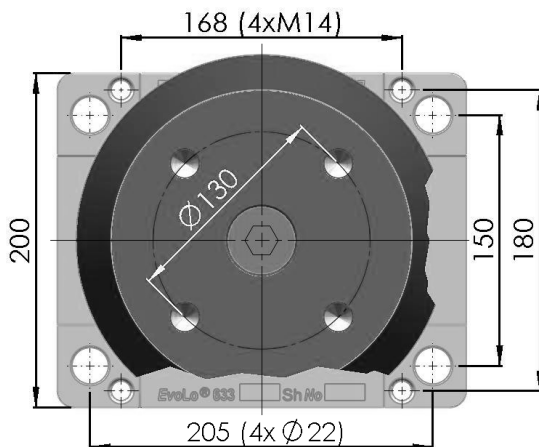
The type is marked in the mounting plate.

## ADVANTAGES

- Type approvals available on request
- Optimum vibration isolation
- Easy and quick installation
- Build in end-limiter to protect against overload
- Capable of handling both vertical and horizontal forces
- Natural rubber gives maximum vibration isolation
- For loads between 2750 and 12.000 kg
- Stock item



## TECHNICAL DRAWING

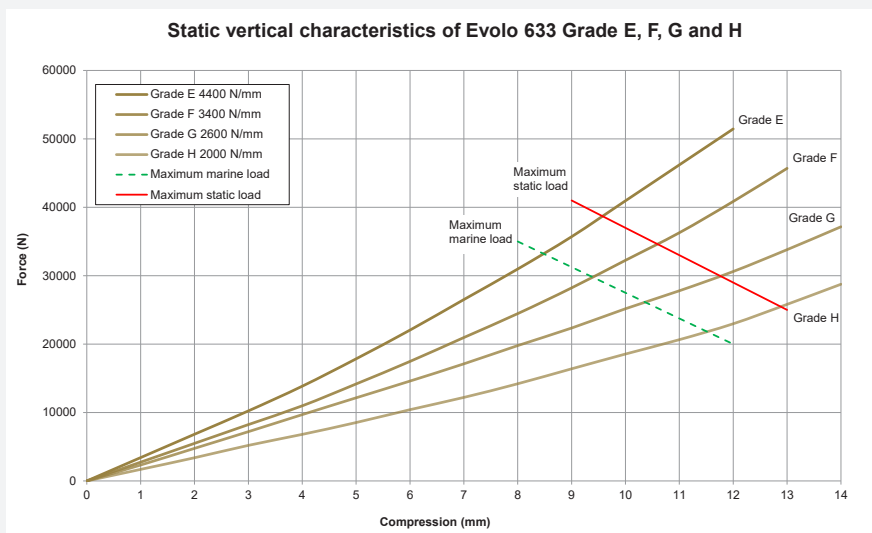
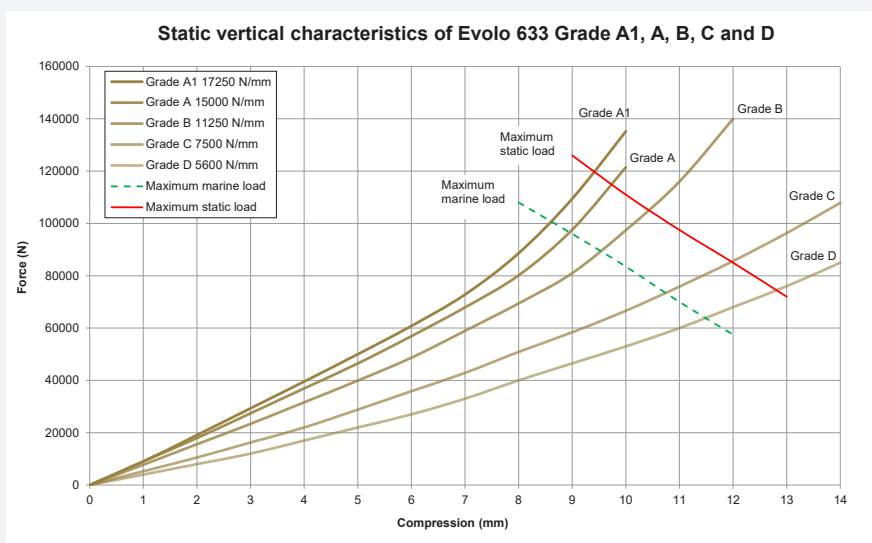


# EVOLLO 633 GRADE A1-H

## TECHNICAL DATA

ARTICLE NO.	GRADE	MAXIMUM LOAD
1030633A1	A1	118 kN
1030633A0	A	118 kN
1030633B0	B	104 kN
1030633C0	C	85 kN
1030633D0	D	72 kN
1030633E0	E	38 kN
1030633F0	F	34 kN
1030633G0	G	30 kN
1030633H0	H	27 kN

## STATIC VERTICAL CHARACTERISTICS



# EVOLU 633 GRADE A1-H

## HORIZONTAL CHARACTERISTICS WHEN PRE-COMPRESSED 4 MM

